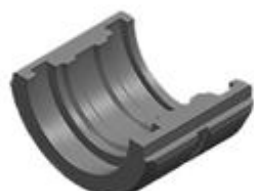


## UNIVERSAL PRESSURE TUBE MOLDS

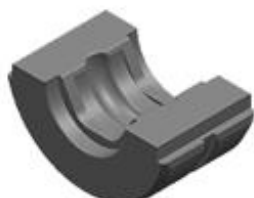
WHAT CAN THEY DO? UP TO FIVE SERIES OF MOLDS ARE USED FOR WORKING OBJECTS



TH Type			
Die Size	Die Size	Section	Joint
TH16	φ16mm		
TH20	φ20mm		
TH26	φ26mm		
TH32	φ32mm		
* TH25 (Extra purchase)	φ25mm		



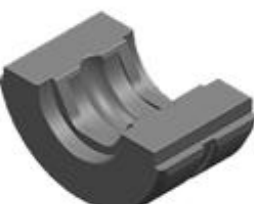
U Type			
Die Size	Die Size	Section	Joint
U16	φ16mm		
U20	φ20mm		
U25	φ25mm		
U32	φ32mm		



V Type			
Die Size	Die Size	Section	Joint
V15	φ15mm		
V18	φ18mm		
V22	φ22mm		
V28	φ28mm		



VAU Type			
Die Size	Die Size	Section	Joint
VAU15	φ15mm		
VAU20	φ20mm		
VAU25	φ25mm		



M Type			
Die Size	Die Size	Section	Joint
M12	φ12mm		
M15	φ15mm		
M18	φ18mm		
M22	φ22mm		
M28	φ28mm		

- ▼ **M** Mold Feature: The interior is hexagonal with two convex grooves

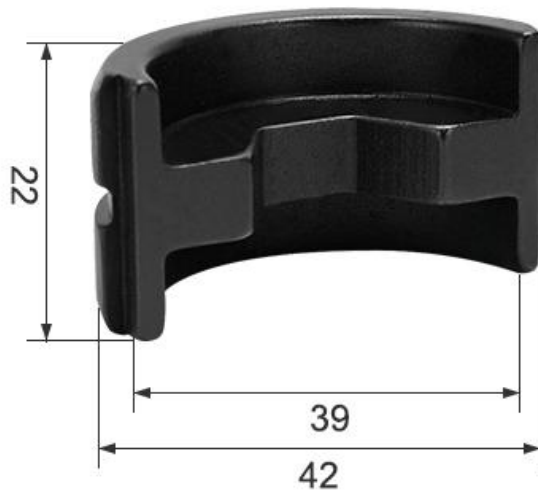


- ▼ **VAU** Mold Feature: The interior is hexagonal with two convex grooves

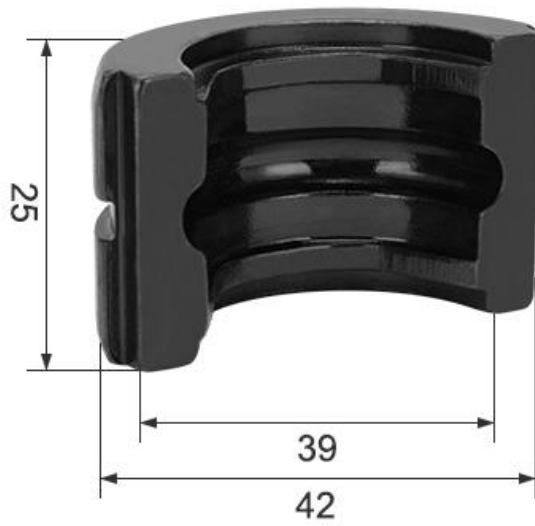


**ReDeal**

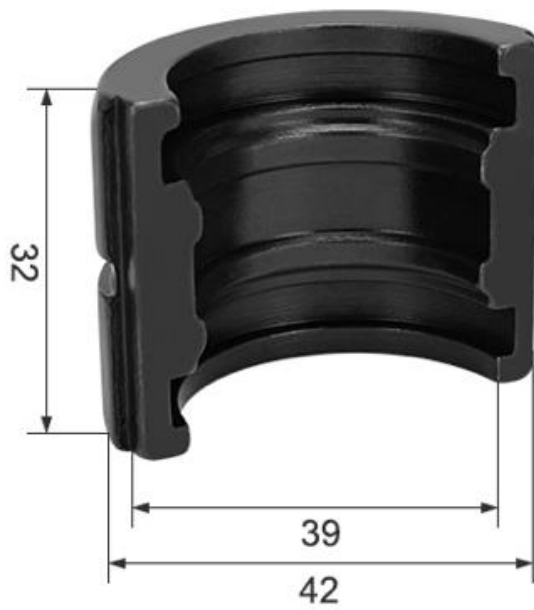
- ▼ **Crimping** Mold Feature: The internal is hexagonal with one convex groove



▼ **V** Mold Feature: The interior is hexagonal with two convex grooves



- ▼ **TH** Mold Feature: The interior is circular with two convex grooves



**Size**

\* Unit: mm



**ReDeal**

- ▼ **U** Mold Feature: The interior is circular with three convex grooves



▼ V: 15、 18、 22、 28

Suitable for pressing stainless steel tube



▼ VAU: 15、 20、 25

Suitable for pressing stainless steel tube



ReDeal



▼ TH: 16、20、26、32、25

Extra purchase

Suitable for pressing aluminum plastic tube



▼ U: 16、20、25、32

Suitable for pressing aluminum plastic tube



ReDeal

▼ M: 12、15、18、22、28

Suitable for pressing stainless steel tube



▼ Crimping: 10、16、25、35、50、70、95、120、150、185、240、300

Suitable for pressing copper/aluminum terminal



10



16



25



35



50



70



95



120



150



185



240



300